

PALAGRUŽA 2020

IOTA: EU-090



9A20A

Slovenian Team activation of the island
Palagruža between 19 and 31 July 2020

S50X, S52P, S53Z, S58MU, 9A3SM

www.s5grp.com/iota

Island Palagruža • Croatia • Europe

S5 Team Palagruža Island activation

Between July 19 and 31 will be Slovenian radio-amateurs Team active on archipelago Palagruža in Croatian part of the Adriatic Sea. More than ten days will be active CW and SSB on radioamateurs KV bands.



The Goals of activity are research of radiowaves propagations from the sea location with QRP and QRO Power, using solar energy in activations of small islands in Palagruža archipelago and IOTA contest, where the multiplayer EU-090 is rare and very attractive.

We will give a chance to all correspondents to do a fairly rare IOTA-090, IOCA CI-084 and WLO-TA 0057 reference.

Working conditions:

TX Antennas:

80, 40 m - vertical

20, 15, 10 m - Spider beam, vertikal

RX antennas:

Beverage,

K9AY

Transceivers and QRO:

FTDX3000D, TS590SG

Solid state Linear amplifiers 1k2W and 1k4W

S5 9A20A TEAM:

This year will be active from Island Palagruža
next operators:

Goran S52P - teamleader, Silvo S50X, Hubi S53Z,
Milan S58MU in Mato 9A3SM.

Sponsors and Donors:

S5TEHNIKA.net d.o.o. -



Please, turn your antennas in direction JN82DJ!

CU! 73 de 9A20A team

PALAGRUŽA ISLAND

IOTA EU-090

IOCA CI-084

UL JN82DJ

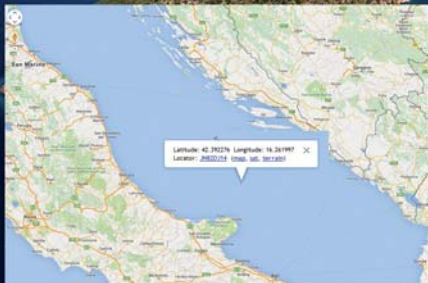
Lighthouse WLOTA 0057



Palagruža is a small, remote Croatian archipelago in the middle of the Adriatic Sea. It consists of one larger island, called Vela or Velika ('Great') Palagruža, and a smaller one, Mala ('Little') Palagruža, as well as a dozen nearby rocks and reefs composed of dolomite. All the main islets are in the form of steep ridges.

The place is some 123 kilometres (76 miles) south of Split, Croatia, and 53 km (33 mi) east of the Gargano peninsula, Italy. It is visible from land only from other remote islands of Italy and Croatia. Palagruža is further south than the mainland peninsula of Prevlaka, making it the southernmost point of the Republic of Croatia. It is uninhabited, except by lighthouse staff and occasional summer tourists. It can be reached only by a chartered motor-boat, requiring a journey of two to three hours from the island of Korčula.

S5 activation and contest Team:
S50X, S52P, S53Z, S58MU, 9A3SM.



Island Palagruža • Croatia • Europe